

GLA Antibody (N-term)
Purified Rabbit Polyclonal Antibody (Pab)
Catalog # AP6727A**Specification**

GLA Antibody (N-term) - Product Information

| | |
|-------------------|------------------------|
| Application | FC, IF, IHC-P, WB,E |
| Primary Accession | P06280 |
| Reactivity | Human |
| Host | Rabbit |
| Clonality | Polyclonal |
| Isotype | Rabbit IgG |
| Calculated MW | 48767 |
| Antigen Region | 83-112 |

GLA Antibody (N-term) - Additional Information**Gene ID** 2717**Other Names**

Alpha-galactosidase A, Alpha-D-galactosidase A, Alpha-D-galactoside galactohydrolase, Melibiase, Agalsidase, GLA

Target/Specificity

This GLA antibody is generated from rabbits immunized with a KLH conjugated synthetic peptide between 83-112 amino acids from the N-terminal region of human GLA.

Dilution

FC~~1:10~50

IF~~1:10~50

IHC-P~~1:10~50

WB~~1:1000

E~~Use at an assay dependent concentration.

Format

Purified polyclonal antibody supplied in PBS with 0.09% (W/V) sodium azide. This antibody is prepared by Saturated Ammonium Sulfate (SAS) precipitation followed by dialysis against PBS.

Storage

Maintain refrigerated at 2-8°C for up to 2 weeks. For long term storage store at -20°C in small aliquots to prevent freeze-thaw cycles.

Precautions

GLA Antibody (N-term) is for research use only and not for use in diagnostic or therapeutic procedures.

GLA Antibody (N-term) - Protein Information

Name GLA ([HGNC:4296](#))

Function Catalyzes the hydrolysis of glycosphingolipids and participates in their degradation in the lysosome.

Cellular Location

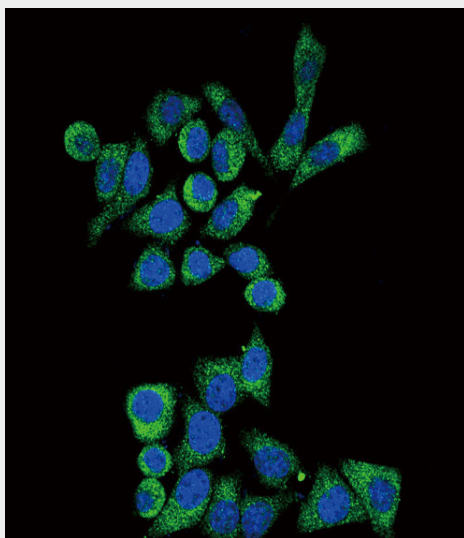
Lysosome.

GLA Antibody (N-term) - Protocols

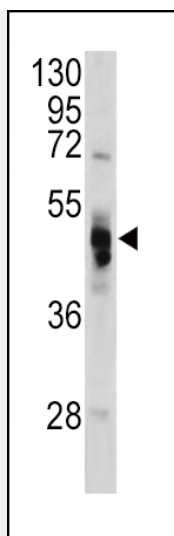
Provided below are standard protocols that you may find useful for product applications.

- [Western Blot](#)
- [Blocking Peptides](#)
- [Dot Blot](#)
- [Immunohistochemistry](#)
- [Immunofluorescence](#)
- [Immunoprecipitation](#)
- [Flow Cytometry](#)
- [Cell Culture](#)

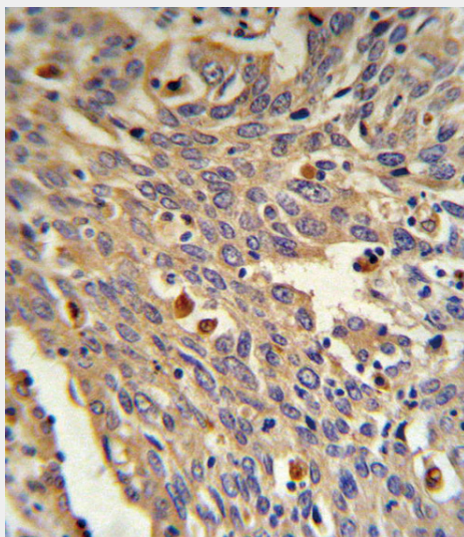
GLA Antibody (N-term) - Images



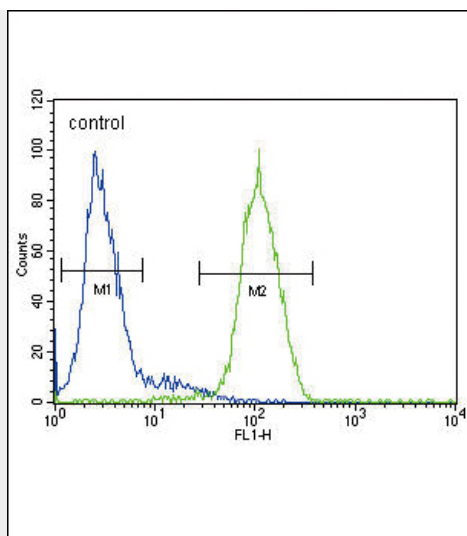
Confocal immunofluorescent analysis of GLA Antibody (N-term) (Cat. #AP6727a) with HeLa cell followed by Alexa Fluor[®] 488-conjugated goat anti-rabbit IgG (green). DAPI was used to stain the cell nuclear (blue).



Western blot analysis of GLA antibody (N-term) (Cat. #AP6727a) in HeLa cell line lysates (35ug/lane). GLA (arrow) was detected using the purified Pab.



GLA Antibody (N-term) (Cat. #AP6727a) IHC analysis in formalin fixed and paraffin embedded human Lung carcinoma followed by peroxidase conjugation of the secondary antibody and DAB staining. This data demonstrates the use of the GLA Antibody (N-term) for immunohistochemistry. Clinical relevance has not been evaluated.



GLA Antibody (N-term) (Cat. #AP6727a) flow cytometric analysis of HepG2 cells (right histogram) compared to a negative control cell (left histogram). FITC-conjugated goat-anti-rabbit secondary antibodies were used for the analysis.

GLA Antibody (N-term) - Background

GLA is a homodimeric glycoprotein that hydrolyses the terminal alpha-galactosyl moieties from glycolipids and glycoproteins. This enzyme predominantly hydrolyzes ceramide trihexoside, and it can catalyze the hydrolysis of melibiose into galactose and glucose. A variety of mutations in this gene affect the synthesis, processing, and stability of this enzyme, which causes Fabry disease, a rare lysosomal storage disorder that results from a failure to catabolize alpha-D-galactosyl glycolipid moieties.

GLA Antibody (N-term) - References

Mignani, R., *Kidney Int.* 75 (10), 1115-1116 (2009)
Ioannou, Y.A., *Biochem. J.* 332 (PT 3), 789-797 (1998)